

## BENCHTOP REVERSE OSMOSIS INFORMATION GUIDE

Reverse osmosis is a well-known water filtration innovation that uses a semipermeable membrane to remove molecules, ions and larger particles from drinking water. Effectively reduces Chlorine, Taste, Odours, Heavy Metals, Fluorides, Chloramines, Parasites, Bacteria, Viruses, Herbicides, Chemicals, and more contaminants.

### SPECIFICATIONS

**Dimensions**  
340 W x 170 H x 160 D mm  
**Flow Rate**  
16 L/H  
**Connects To:**  
1/2" Kitchen Faucet Spout  
**Operating Pressure:**  
8.6 Bar  
**Operating Temperature**  
2°C - 37°C

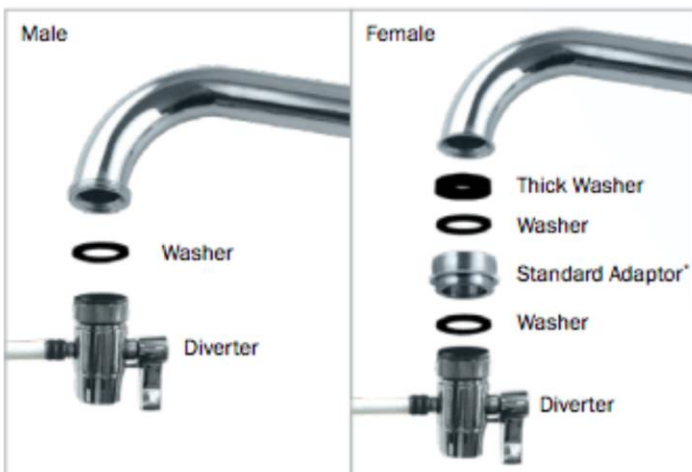


<b>1st Stage</b> Made in USA NSF Certified Inline Sediment Filter  For removal of dirt, sand, rust, dust, silt and algae.	<b>2nd &amp; 4th Stage</b> Made in USA NSF Certified Inline Carbon Filter  For reduction of chlorine, and other chemicals. Protects the membrane.	<b>3rd Stage</b> Made in USA Dupont Filmtec Reverse Osmosis Membrane  Repels heavy metals. Removes Fluorides. Hardness and Salts.	<b>5th Stage</b> Inline Alkalisng/ Mineralising Filter  Raises the pH level of the water and adds minerals such as Calcium, Magneisum and Potassium.

Every year 1st, 2nd and 4th Stages should be replaced. However, replacement frequency depends on water quality and usage.

## BENCHTOP REVERSE OSMOSIS INSTALLATION GUIDE

Thank you and congratulations on your Benchtop Reverse Osmosis purchase. Please read these instructions carefully prior to installation.



\*We stock a range of adaptors if the standard adaptor does not fit.

Diagram 1. Set up for female fittings and male fittings

### WARNING: DO NOT RUN HOT WATER THROUGH THE SYSTEM

Thread tape only is permitted. If thread sealants are used all warranty is voided.

1. Find a convenient countertop location to place the filter system in reach of your kitchen faucet.
2. Unscrew the existing aerator from your faucet.
3. Referring to the Diagram 1 - an external thread indicates a male fitting, while an interior thread indicates female fitting.
  - With a male fitting, simply screw on the Diverter.
  - With a female fitting, first screw on the Standard Adaptor provided, then screw on the Diverter.
4. Flush the system for a few minutes before use, this will remove other non-toxic carbon fines and oxygen (air bubbles) from the new cartridges.

### What's included?

- 5 Stage Filtration system
- 1 x Made in USA Sediment Filter (IL-102005SS-5)
- 1 x Made in USA Carbon Pre-Filter (IL-102040SS-5)
- 1 x Made in USA Filmtec Membrane (MEM-75GPDFLMTM)
- 1 x Made in USA Carbon Post-Filter (IL-102040SS-5)
- 1 x Alkalisng Filter (IL-1125BB-ALK) \*Optional
- 1 x Diverter
- 1 x 1/4" Food Grade White Tube
- 1 x 1/4" Food Grade Black Tube
- 1 x 1/4" Food Grade Blue Tube
- 1 x Pressure Gauge
- 1 x Adaptor

## BENCHTOP REVERSE OSMOSIS Maintenance Procedure

WA WATER FILTERS thanks you for purchasing this benchtop reverse osmosis filter system. Your system is a proven performer manufactured from only quality materials and components that will give years of 'filtered fresh' water free of impurities if maintained properly. The filter cartridges need to be replaced regularly to maintain optimum performance. This is a simple procedure when following instructions.

To order cartridge replacements or service, please contact our sales team at (08) 6156 0220

### Annual replacement approximate cost

1st Year: \$140\* - 2nd Year: \$240\*  
3rd Year: \$250\* - 4th Year: \$240\*

			
<b>1st Stage</b>	<b>2nd &amp; 4th Stage</b>	<b>3rd Stage</b>	<b>5th Stage</b>
NSF Certified Inline Sediment Filter (IL-102005SS-5): Every 1 Year	NSF Certified Inline Carbon Filter (IL-102040SS-5): Every 1 Year.	Dupont Filmtec Membrane (MEM-75GPDFL MTC): Every 3-4 Years	Inline Alkalisng Mineralising Filter (IL-1125BB-ALK) Every 2 Years

Every year 1st, 2nd and 4th filter cartridges should be replaced. However, replacement frequency depends on water quality and usage.

To do any service in your water filter system ensure you have switched off the feed water to your system.



### MEMBRANE SERVICE

Disengage tubings from the membrane housing cap.

1. Disengage the housing and locate your membrane spanner and open the Membrane Housing. Membrane housing cap can be unscrewed by hand.



2. Remove the cap on the membrane housing and by using a pair of needle nose pliers remove the membrane with a twisting motion and discard the Membrane.

3. To connect the new filter membrane, remove membrane packaging, only remove the outer shrinkwrap packaging, DO NOT remove any other packaging from the membrane.

a. When installing the new membrane, please double check that the new membrane and the old membrane have the same specifications (part number).

4. Check the flow arrow in the new membrane and place the new membrane in the position as the previous membrane was.

5. Once the membrane is in the right position, INSERT THE NEW MEMBRANE

6. To make sure the membrane housing is fully sealed, you may use plumbers' silicone grease to lubricate the O-ring and the main seal. Screw in the membrane housing cap, and engage the membrane housing to the system. Then, connect the tubing. Push the tubes as far as they can go.

7. The process of flushing the membrane takes a bit more time. Turn on the water supply allowing water to run through the system. Let the water run through the system for about 10 minutes.

### Quick Connect Fittings

1. Remove the cover by compressing the clips at each end of the unit.

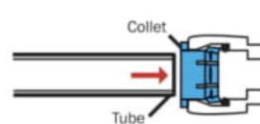
2. Locate the filter cartridge to be replaced, and disconnect the hoses connected to that filter.

*Note: Before disconnecting please check the flow arrow and specifications in the current filter to place the new filter in the correct position.*

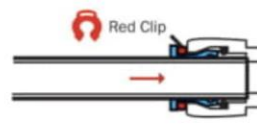
3. To disconnect the hose/tube, first remove the red clip. Use two fingers to push into the collet and at the same time pull out the tube.

4. Repeat the same process in the step 3 to disconnect the hose at the other end of the filter cartridge.

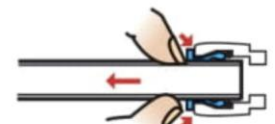
5. Remove and dispose the filter cartridge.



1 To make the connection, push the tube firmly into the collet.



2 Make sure the tube is pushed as far as it can go and secure with a John Guest red clip.



3 To remove the tube - First remove the red clip. Use two fingers to push onto the collet and at the same time pull out the tube.

6. To connect the new filter cartridge, remove any protection that the filter may have at the ends.

*Note: When installing the new filter, please double check that the new filter and the current filter have the same specifications (part number).*

7. Check the flow arrow in the new filter and place the new filter in the position as the previous filter was. Once the filter is in the right position, push the tube as far as it can go and secure with a John Guest Clip.

8. Repeat the step 7 to connect the other end of the new filter cartridge.

9. Repeat the same process for any filter cartridge replacement.