

BENCHTOP REVERSE OSMOSIS Maintenance Procedure

WA WATER FILTERS thanks you for purchasing this benchtop reverse osmosis filter system. Your system is a proven performer manufactured from only quality materials and components that will give years of 'filtered fresh' water free of impurities if maintained properly. The filter cartridges need to be replaced regularly to maintain optimum performance. This is a simple procedure when following instructions.

To order cartridge replacements or service, please contact our sales team at (08) 6156 0220

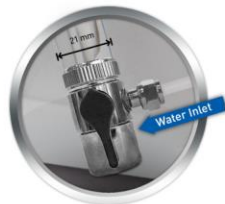
Annual replacement approximate cost

1st Year: \$140* - 2nd Year: \$240*
3rd Year: \$250* - 4th Year: \$240*

			
1st Stage	2nd & 4th Stage	3rd Stage	5th Stage
NSF Certified Inline Sediment Filter (IL-102005SS-5): Every 1 Year	NSF Certified Inline Carbon Filter (IL-102040SS-5): Every 1 Year.	Dupont Filmtec Membrane (MEM-75GPDFL MTC): Every 3-4 Years	Inline Alkalisng Mineralising Filter (IL-1125BB-ALK) Every 2 Years

Every year 1st, 2nd and 4th filter cartridges should be replaced. However, replacement frequency depends on water quality and usage.

To do any service in your water filter system ensure you have switched off the feed water to your system.



MEMBRANE SERVICE

Disengage tubings from the membrane housing cap.

1. Disengage the housing and locate your membrane spanner and open the Membrane Housing. Membrane housing cap can be unscrewed by hand.



2. Remove the cap on the membrane housing and by using a pair of needle nose pliers remove the membrane with a twisting motion and discard the Membrane.

3. To connect the new filter membrane, remove membrane packaging, only remove the outer shrinkwrap packaging, DO NOT remove any other packaging from the membrane.

a. When installing the new membrane, please double check that the new membrane and the old membrane have the same specifications (part number).

4. Check the flow arrow in the new membrane and place the new membrane in the position as the previous membrane was.

5. Once the membrane is in the right position, INSERT THE NEW MEMBRANE

6. To make sure the membrane housing is fully sealed, you may use plumbers' silicone grease to lubricate the O-ring and the main seal. Screw in the membrane housing cap, and engage the membrane housing to the system. Then, connect the tubing. Push the tubes as far as they can go.

7. The process of flushing the membrane takes a bit more time. Turn on the water supply allowing water to run through the system. Let the water run through the system for about 10 minutes.

Quick Connect Fittings

1. Remove the cover by compressing the clips at each end of the unit.

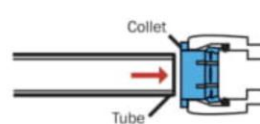
2. Locate the filter cartridge to be replaced, and disconnect the hoses connected to that filter.

Note: Before disconnecting please check the flow arrow and specifications in the current filter to place the new filter in the correct position.

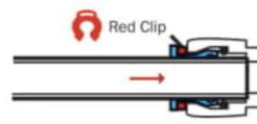
3. To disconnect the hose/tube, first remove the red clip. Use two fingers to push into the collet and at the same time pull out the tube.

4. Repeat the same process in the step 3 to disconnect the hose at the other end of the filter cartridge.

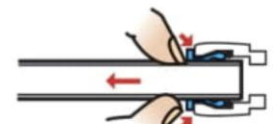
5. Remove and dispose the filter cartridge.



1 To make the connection, push the tube firmly into the collet.



2 Make sure the tube is pushed as far as it can go and secure with a John Guest red clip.



3 To remove the tube - First remove the red clip. Use two fingers to push onto the collet and at the same time pull out the tube.

6. To connect the new filter cartridge, remove any protection that the filter may have at the ends.

Note: When installing the new filter, please double check that the new filter and the current filter have the same specifications (part number).

7. Check the flow arrow in the new filter and place the new filter in the position as the previous filter was. Once the filter is in the right position, push the tube as far as it can go and secure with a John Guest Clip.

8. Repeat the step 7 to connect the other end of the new filter cartridge.

9. Repeat the same process for any filter cartridge replacement.