

### CHOICE OF FILTERS



Triple Undersink w/  
Sediment, Carbon and  
Carbon

**\$435\***



Triple Undersink w/  
Sediment, Fluoride and  
Carbon

**\$485\***



Triple Undersink w/  
Sediment, Fluoride and  
Disruptor®

**\$545\***

#### Reduction Claim

Sediments	✓	✓	✓
Chlorine	✓	✓	✓
Pesticides & Herbicides	✓	✓	✓
Flammable Liquids (VOCs)	✓	✓	✓
Taste, Odours & Colour	✓	✓	✓
Heavy Metals (Copper, Lead...)	✓	✓	✓
Parasites	✓	✓	✓
Fluorides	✗	✓	✓
Bacteria & Viruses	✗	✗	✓
PFAS Compounds	✗	✗	✓
Chloramines	✗	✗	✓

#### Replacement Filters Bundle

**\$144\***

**\$184\***

**\$224\***

#### SPECIFICATIONS

Flow Rate: 3 LPM  
Connects To: 1/2" Cold Water Line  
Operating Temperature: 5-35°C  
Dimensions:  
370 W x 370 H x 130 D mm

If height is an issue, the system can go laying down. This position won't affect its performance.

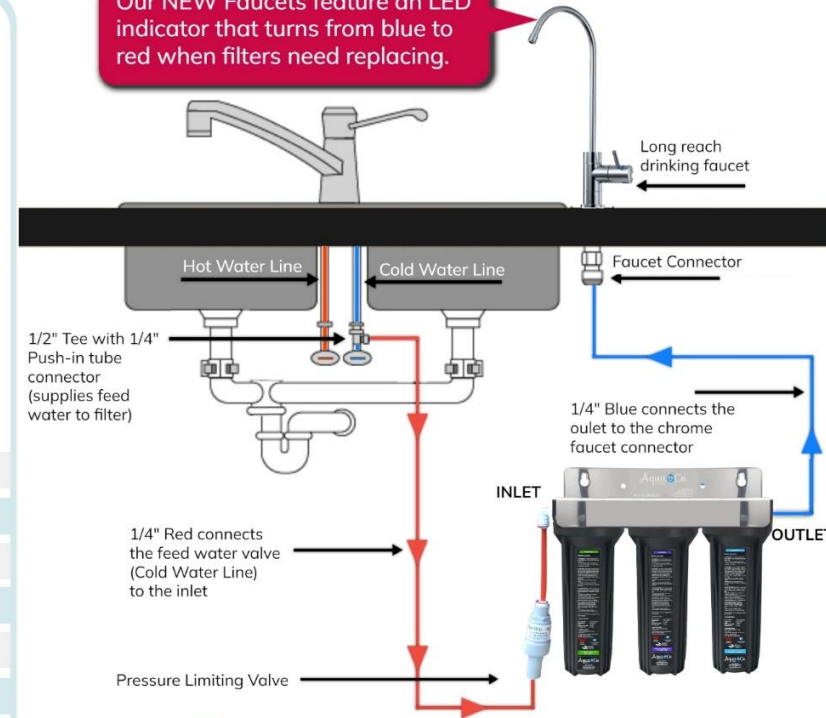


**WaterMark**

Certificate No.: 23448  
AS 3497: 2021

**5 YEARS WARRANTY**

Our NEW Faucets feature an LED indicator that turns from blue to red when filters need replacing.

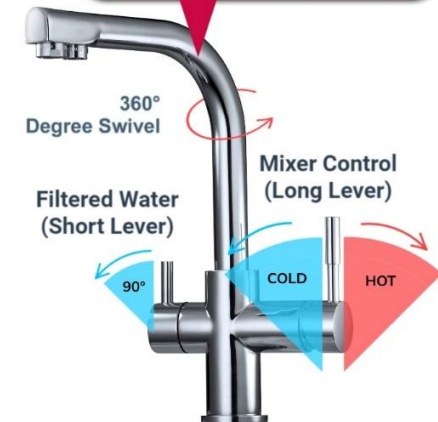


Unlike an RO system, these systems will NOT reduce Total Dissolved Solids (TDS), or Calcium Hardness.  
If you are interested in a filter that removes TDS or hardness, consider our Reverse Osmosis (RO) systems.

FROM  
**\$199\***  
**INSTALLATION**  
Prices may vary depending on location.

If drilling through stone is required, an extra \$50 will be charged for the diamond drill bit and insurance fee.

If you do not want a separate drinking faucet, you can upgrade your kitchen faucet and get a 3 Way Chrome Mixer Tap for \$345\*.



Filter Cartridges are recommended to be replaced every year. However, replacement frequency depends on water quality and usage.

- Every Year
- Every 18 Months
- Every Two Years

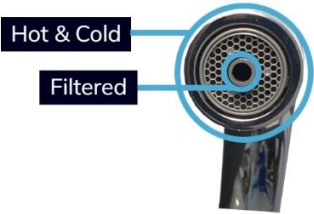
\*Prices are subject to change without any prior notice.

## UPGRADE TO A 3 WAY MIXER

to avoid drilling a hole through your stone/wood bench.

In 3 Way Mixers, filtered water has an independent nozzle in the spout. Therefore, filtered and unfiltered water never mix.

### 3 Way Mixers w/ Round Tip



- SS High Loop -  
400mm H x 225mm W

- SS Petite -  
355mm H x 220mm W

- SS Tall -  
365mm H x 245mm W

- SS Short -  
265mm H x 245mm W



Stainless Steel HL  
**\$395\***



Stainless Steel Petite  
**\$395\***



Stainless Steel Tall  
**\$395\***



Stainless Steel Short  
**\$395\***

- High Loop -  
370mm H x 190mm W



Matt Black HL  
**\$395\***



Chrome HL  
**\$365\***



Chrome SL  
**\$365\***



Matt Black SL  
**\$395\***

Our NEW Chrome 3 Way Mixers feature an LED indicator that turns from blue to red when the filter needs replacing.

\*Prices are subject to change without any prior notice.

### 3 Way Mixers w/ Elongated Tip



3 Way Mixers and Taps are Certified to NSF/ANSI 61 Section 9.

3 Way Mixers have a long lever for hot and cold, and a short lever for only filtered water.

Instead of having a separate faucet for filtered water, consider having a 3 Way Mixer to avoid drilling a hole through your stone/wood bench.



**5 YEARS WARRANTY**



Stainless Steel Pull Out Hose  
**\$595\***

Filtered

Hot Cold