

AquaCo[®] FILTERS

Whole House Filtration System

Unmatched Components, Unbeatable Performance and Unique Benefits!



FREE-REPLACEMENT FILTERS

1 FREE FILTER SET PER REFERRAL
On each successful new install.^{1,4,5}




UNLIMITED ADD-ON WARRANTY

2 WARRANTY EXTENSION
12 months add-on warranty when filters have been replaced every 18 months.²



UNLIMITED FREE 1st STAGE FILTER

3 FREE EMERGENCY FILTER
If filter blocks prematurely before the 12-month replacement period.³



(POE) - Part 1

AquaCo Triple Premium ✓

OUR SOLUTION




(POU) - Part 2 (Optional)

AquaCo Compact RO ✓

Premium Whole House Water Filters				BOTH		Compact RO	
Human Eye 1000µm	Optical Microscope 100µm	Optical Microscope 10µm	Optical Microscope 1µm	Scanning Electron Microscope 0.1µm	Scanning Electron Microscope 0.01µm	ST Microscope 0.001µm (1nm)	ST Microscope 0.0001µm (0.1nm)
Microplastics				Viruses		Hormones	Fluoride Ions
Sand Particles		Fine Dust				Antibiotics	Dissolved Salts
						BPA	
Human Hair		Parasites				Toxic Heavy Metal Ions	PFAS & PFOS
Milled Flour				Bacteria			Arsenic
						Pesticides	
Bloodworms		Insect Eggs		Dye, Gelatin & Pigment			

AquaCo's Unique Benefits Terms & Conditions:

1. Maximum of one free set per year.
2. Applies once 5-year warranty expires providing filters have always been replaced within 18 months.
3. Limit of one free sediment filter per year.
4. A free set of replacement filters is only available when the referee purchases at full price.
5. Not available in conjunction with any promo or discount on the referral or referee side.



What Many Families Notice...



- ✓ Significantly less scale buildup on taps & shower screens
- ✓ Less soap scum accumulation
- ✓ Fewer stubborn mineral deposits



- ✓ Improved lather from soaps & shampoos
- ✓ A cleaner, fresher shower experience
- ✓ Reduced chlorine odour in steam



- ✓ Cleaner, fresher taste from every tap
- ✓ Softer, smoother feeling hair and skin
- ✓ Better smelling and better tasting water



- ✓ Less scrubbing
- ✓ Better soap action
- ✓ Protects bathroom & plumbing



- ✓ Reduced spotting on glass & vehicles
- ✓ May help with the prevention of iron stains.



- ✓ pH>8 (Alkaline water)
- ✓ Mineralised drinking water
- ✓ Improved flavour in tea & coffee



- ✓ Shinier Dishes
- ✓ May assist in extending appliance lifespan
- ✓ Protects dishwashers from scale accumulation



- ✓ Clothes that feel softer
- ✓ Cleaner heating elements
- ✓ Less residue on fabrics



- ✓ Protects tapware and plumbing fixtures
- ✓ Shinier surfaces & easier cleaning
- ✓ Supports cleaner internal plumbing



- ✓ Protects coffee machines and ice makers from scale accumulation
- ✓ Clearer, better tasting ice

Important Information: AquaCo filtration systems are designed to reduce specific contaminants commonly found in treated and bore water supplies. Outcomes vary depending on incoming water quality, usage patterns, and household conditions. Our systems are not intended to diagnose, treat, cure, or prevent any medical condition.

Triple Premium PFAS Whole House Filtration System

Stainless Steel Oil Filled Pressure Gauges

- ✓ Sun-resistant.
- ✓ Corrosion-resistant.
- ✓ Monitor incoming and outgoing water pressure.
- ✓ Stainless Steel oil filled pressure gauges for maximum precision and durability.

316 Marine Grade Stainless Steel Cover

- ✓ High-quality, anticorrosive, and weather-resistant. Designed to protect equipment in extreme conditions keeping filters and housings cool.
- ✓ Unlike plastic covers, it won't discolor or become brittle.

Note: Use durable and sun-resistant components. Painted covers and powder coated brackets can corrode, crack and peel off over time.

316 Marine Grade Stainless Steel Bracket

- ✓ Designed to protect equipment in extreme conditions.
- ✓ Corrosion resistant.



Stainless steel has higher reflectivity, meaning it absorbs less heat from sunlight compared to plastic. In contrast, plastic absorbs more solar radiation and can reach significantly higher temperatures under the same conditions.

For example, an experiment we conducted on a 32°C day, we placed both materials in direct sunlight and measured their surface temperatures.

- Results:
- ✓ Stainless Steel Cover: 27°C
 - ✗ Plastic Cover: 50°C

Stainless Steel Reinforced Ports

- ✓ 316 Marine Grade Stainless Steel reinforced heads prevent leaks, cracks and material fatigue after years of use under pressure.



PP Caps with Superior Super-Seal

- ✓ PP caps for maximum strength and durability.



- ✓ Our super-seal mechanism protects the washers from being damaged when tightening the housings preventing water bypass.

Stainless Steel Stand and Frame

- ✓ Corrosion resistant.
- ✓ Designed to protect equipment in extreme conditions. Powder coated brackets rust over time.
- ✓ A full Stainless-Steel Frame gives rigidity to the system, protecting the heads and pipework from stress when replacing the filters.

20" x 4.5" Filters

- ✓ 20" filters have 100% more capacity compared to 10" x 4.5" filters.
- ✓ Filters last up to 18 months compared to 6 to 9 months for 10" and 15".



ScaleStop® Sediment Filter

- ✓ Anti-Scale Technology: Inhibits hard mineral buildup.
- ✓ Triple gradient sediment filter.
- ✓ 100% polypropylene.
- ✓ Removes sediment, dust, dirt, rust, sand, silt, and algae.

Chlorine, Taste and Odour Removal

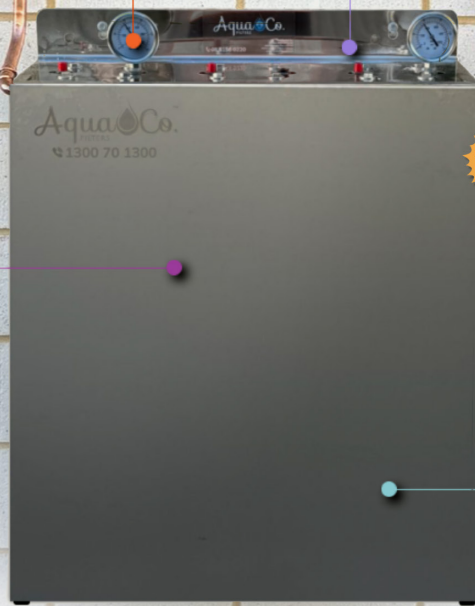
- ✓ Pure Coconut Shell Activated Carbon.
- ✓ Removes chlorine, volatile organic compounds, pesticides, herbicides, taste and odour from water.

Disruptor® Filter

- ✓ Combines 4 filtration methods: electro-adsorption, mechanical, sorption and bacteriostatic filtration methods.
- ✓ Serves as a polishing carbon filter, effectively removing any residual chlorine left after the second filtration stage.

Reduction Claim

- ✓ PFOA (Perfluorooctanoic Acid) > 98.9%
- ✓ PFOS (Perfluorooctane Sulfonic Acid) > 99.0%
- ✓ Total Chlorine (Chloramines) > 99.3%
- ✓ Free Chlorine > 99.5%
- ✓ Lead (Pb) > 99.4% @pH 6.5
- ✓ Lead (Pb) > 99.4% @pH 8.5
- ✓ Copper (Cu) > 99.9% @pH 8.5
- ✓ Copper (Cu) > 99.9% @pH 6.5
- ✓ E.Coli (Total Coliforms) > 99.9999%
- ✓ Coliphage (Bacterial Virus) 99.9995%



FOR PFAS, FLUORIDE, HARDNESS REMOVAL AND MORE...

For customers looking for alkaline water (pH>9), a 99.99% fluoride and hardness removal as well as sweet tasting water (Bottled-like Water). The purchase, installation and maintenance of the system will be a fraction of a full-size reverse osmosis.

Certified Reduction Claim:

- ✓ Fluoride
- ✓ Nitrates & Salt
- ✓ Calcium Hardness
- ✓ Arsenic
- ✓ Urea (Urine Compounds)
- ✓ Microorganisms
- ✓ Pharmaceuticals
 - o Antibiotics
 - o Hormones
- ✓ PFAS (Flame Retardants)
- ✓ Endocrine Disrupting Chemicals (EDC)
 - o BPA
- ✓ Total Dissolved Solids (TDS)
 - o Organic Compounds
 - Aniline
 - Biphenyl
 - Caffeine
 - Chloroform
 - o Inorganic Compounds
 - Calcium Carbonate
 - Magnesium
 - Sodium Bicarbonate
 - Sodium Bromide
 - Sodium Chloride
 - Sodium Cyanide
 - Sodium Fluoride
 - Sulfates
 - Silica
 - Phosphoric Acid



\$695

FAQs

Where is it installed?

Most installations are on the side wall of your house, after the side gate, next to the water heater or in the garage. The location of the system will be discussed with you on the day of the installation.

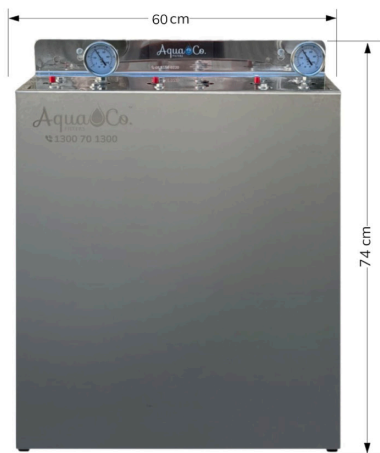
Does it include the bypass?

All installations include the bypass to allow unfiltered or filtered water to go into the property. Also a bypass is needed when servicing or replacing your filters.

Does it lower my pressure?

In over 99% of installations, our customers report no significant pressure drop using our Whole House Water Filters. With the built-in pressure gauges, you can effortlessly monitor both incoming and outgoing water pressure, making it easy to determine if any pressure variations arise from the system itself.

Multi-Stage Whole House Water Filtration System with Stainless Steel Cover

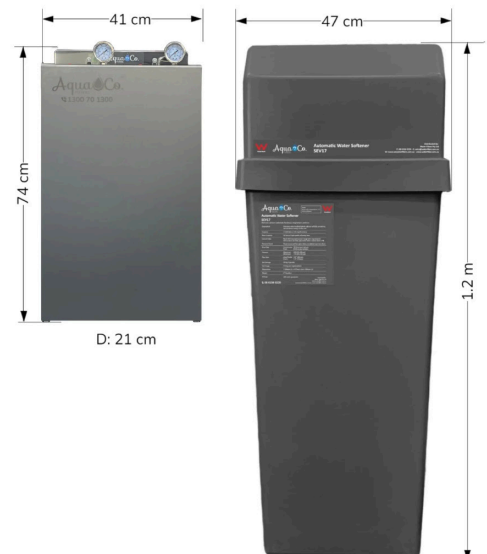


D: 22 cm

Technical Specifications

Max Flow Rate: 60 LPM
 Connection Type: 1" or 3/4" Ports
 Operating Pressure: 70 psi
 Maximum Pressure: 70 psi
 Minimum Pressure: 30 psi
 Operating Temperature: 2°C - 52°C

Fully Automatic Water Softener with Multi-Stage Pre-Filtration System and Stainless Steel Cover



D: 21 cm

D: 37 cm

Technical Specifications

Max Flow Rate: 40 LPM
 Connection Type: 3/4" Ports
 Operating Pressure: 70 psi
 Maximum Pressure: 70 psi
 Minimum Pressure: 30 psi
 Operating Temperature: 2°C - 52°C



Choose Long Lasting Components, Choose AquaCo!

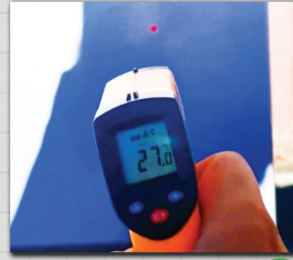
316 Marine Grade Stainless Steel Cover



The 316 Marine Grade Stainless Steel Cover is corrosion resistant and designed to protect equipment in extreme conditions. Also, when exposed to the same amount of heat, Stainless Steel conducts heat much more effectively than plastic, resulting in slower heating and a lower maximum temperature.

A shield, protecting the filter and its components from physical damage, potential UV degradation, or any other external factors that might compromise the filter's functionality or lifespan.

Stainless Steel Cover = Cool under the sun



Plastic Cover = Hot under the sun



Stainless Steel Cover = Long-Lasting Housings



No Cover = Brittle & Discoloured Housings



316 Marine Grade Stainless Steel Bracket, Frame & Gauges



Crafted from premium 316 Marine Grade Stainless Steel, the frame, bracket, and gauges offer exceptional durability, superior sun resistance, and outstanding protection against corrosion.

The sturdy frame ensures system rigidity, safeguarding the heads and pipework from stress during filter replacements.

Additionally, the stainless steel oil-filled pressure gauges deliver maximum precision and long-lasting durability, making this system both reliable and robust.



SS Frame & Bracket = Highly Anticorrosive



Powder Coated Frames & Covers = Rust, Crack & Peel



SS Pressure Gauges = Strong & Corrosion Resistant



Plastic Gauges = Discoloured & Brittle Gauges

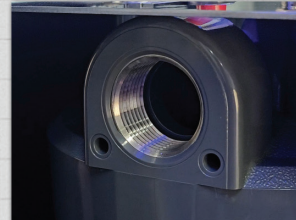


316 Marine Grade Stainless Steel-Reinforced Heads



Stainless Steel-reinforced heads prevent leaks, cracks and material fatigue after years of use under pressure. Dezincified brass ports can leach zinc into the water and degrade in harsh environments.

SS Reinforced Heads = Heavy-duty & Long-lasting



Plastic Ports = Crack & Leak



Super-Seal Cap



Nipples in the caps provide a more secure and tighter seal compared to flat washers by sealing and compressing on the outside of the nipple (unfiltered water side) using a beveled edge instead of a sharp seal that usually cuts through the washer.

Super-Seal = Better Seal & No Contamination



Flat Washers = Deteriorate, Release Microplastics & Grow Mold



CAUTION! Stay away from POOR DESIGNS and FALSE DISCOUNTS!

- Weather Proof!**
Cool in summer, corrosion resistant
- Long lasting filters!**
Filters last up to 18 months
- Multi-Stage Filtration!**
Your house most complete protection
- Fuss free!**
Our expert plumber installs your system on the spot
- Peace of mind!**
All claims backed by laboratory test results

WHOLE HOUSE WATER FILTERS



Multi-Stage Whole House Water Filtration System with Stainless Steel Cover

Fully Automatic Water Softener with Multi-Stage Pre-Filtration System and Stainless Steel Cover



Notes

- Travel charges may apply for installations outside our catchment zones.
- Terms and conditions apply for installation included in price (Specific requests or requirements may incur extra charges).
- Power Point for water softener is not included.



	PREMIUM \$3395* Including Installation 1, 2	PREMIUM PFAS \$3595* Including Installation 1, 2	PREMIUM \$4900* Including Installation 1, 2, 3	PREMIUM PFAS \$5100* Including Installation 1, 2, 3
--	--	---	---	--

Certified Reduction Claim				
Sediments	✓	✓	✓	✓
Chlorine & Chloramines	✓	✓	✓	✓
Pesticides & Herbicides	✓	✓	✓	✓
Flammable Liquids (VOCs)	✓	✓	✓	✓
Taste, Odours & Colour	✓	✓	✓	✓
Heavy Metals (Copper, Iron, Lead...)	✓	✓	✓	✓
Parasites, Bacteria & Viruses	✓	✓	✓	✓
PFAS Compounds	✗	✓	✗	✓
Visible Calcium Scale	60%	>80%	100%	100%
Replacement Filters Pack	\$484 \$449* REP-203PR-WAWF	\$484 \$449* REP-203SCD-WAWF	\$374 \$349* REP-202PR-WAWF	\$374 \$349* REP-202SD-WAWF

*Prices are subject to change without any prior notice.